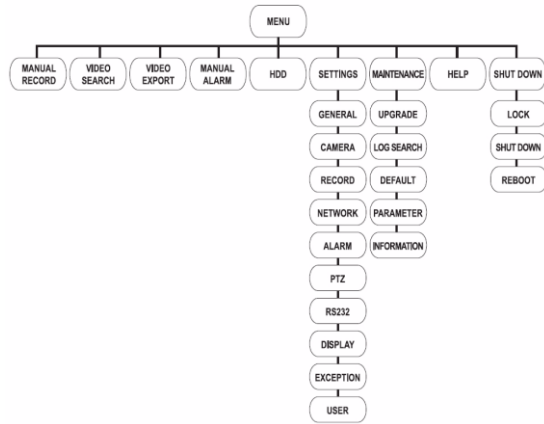


Quick Start Guide

DS-7208 & 7216HVI-S Series DVR

Menu Structure

The menu structure of the DS-7208HVI-S & 7216HVI-S Series DVR is as followed:



Startup and Shutdown

Proper startup and shutdown procedures are crucial to expanding the life of your DVR.

To startup your DVR:

1. Ensure the power supply is plugged into an electrical outlet. It is **HIGHLY** recommended that an Uninterruptible Power Supply (UPS) is used in conjunction with the unit.
2. Turn on the switch on rear panel. The Status indicator LED should turn green. The unit will begin to start.
3. After startup, the Power indicator LED will remain Green.

There are two proper ways to shutdown the DVR. To shutdown the DVR:

• OPTION 1: Standard Shutdown

1. Enter the Shutdown menu by clicking on Menu > Shut down.



2. Select the Shutdown button.
3. Message “Are you sure you want to shut down now?” will pop up.
4. Click “Yes” and message “Please shutdown power!” will pop up
5. Turn off switch on rear panel

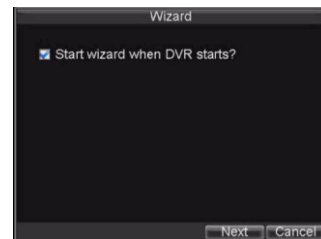
• OPTION 2: Manual Shutdown

1. Press and hold the POWER button for 3 seconds.
2. Enter the administrator’s username and password in the dialog box for authentication.
3. Message “Are you sure you want to shut down now?” will pop up.
4. Click “Yes” then message “Please shutdown power!” will pop up
5. Turn off switch on rear panel

Note: Do not press the POWER button again when the system is shutting down.

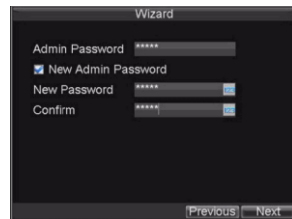
Using the Setup Wizard

By default, the Setup Wizard will start once the DVR has loaded. The Setup Wizard will walk you through some of



the more important settings of your DVR. If you do not wish to use the Setup Wizard at this time, click the Cancel button. You may also choose to use the Setup Wizard at a later time by leaving the “**Start Wizard when DVR starts?**” checkbox checked. To start using the Setup Wizard:

1. Click the **Next** button on the Wizard window. This will take you to the **User Permission** window.



2. Navigate to the **Admin Password** input field.
3. Enter the admin password into the **Admin Password** input field. By default, the password is 12345.
4. To change the admin password, check the **New Admin Password** checkbox. Enter the new password and confirm the password in the given fields.

5. Click the **Next** button. This will take you to the **HDD Management** window.



6. To start HDD management, click the **Enter** button.

7. If a new HDD was recently installed, select the HDD from the list to initialize it. Initializing the HDD will format and remove all data from it.



8. After the HDD has been initialized, click the **OK** button which will take you back to the Setup Wizard window.

9. Click the **Next** button. This will take you to the **Record Settings** Window.



10. To enter the **Record Settings** window, click the **Enter** button.
11. Select the **Schedule** tab.
12. Click the **Edit** button. This will open up a new recording schedule.

13. Check both the **Enable Schedule** and **All Day** checkboxes. This will enable the recording schedule and have it record continuously all day.

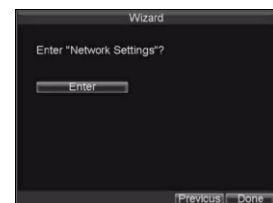


14. Click the **OK** button.

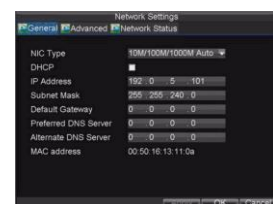
This will take you back to the **Schedule** tab. To copy the schedule to a different channel, select the channel or all

under **Copy To** and click the **Copy** button.

15. Click the **Next** button. This will take you to the **Network Settings** window.



16. To configure network settings, click the **Enter** button.



17. Enter the **IP Address**, **Subnet Mask** and **Default Gateway**.
18. Click the **OK** button to return to the Setup Wizard.
19. If all the settings are entered as desired, click the **Done** button to finish and exit the Setup Wizard.

Congratulations! You've completed the Setup Wizard. The next step in the initial setup process is to setup the system date and time.

Setting Date & Time

It is extremely important to setup the system date and time to accurately timestamp recordings and events.

To setup date and time:

1. Enter General Settings menu by clicking Menu > Setting >



General.

2. Enter the correct date and time under **System Time**.
3. Click the Apply button to save the setting.

Playback

Playback from Search

To playback files from a video search:

1. Enter into the Video Search menu by clicking Menu > Video Search.
2. Set the search parameters by selecting cameras to search, video/file type and the start/end time.
3. Click the Play button to start playback of all the files found with the specified search criteria or click the



Search button to bring up the list of search results. After search results are presented, select the file you would like to playback and press Play.

4. Recordings will automatically be play backed in the Playback interface.



Playback from Live Preview

You may also instantly playback from a channel while watching a Live Preview. The playback will be of recordings from the past 5 minutes.

To playback from a channel instantly in Live Preview:

• Using a Mouse:

1. Right-click the mouse on desired channel and select the Playback button.
2. Recordings from the selected channel will start playing back in the Playback interface. An *Attention* message will appear if there are no recordings found from the previous 5 minutes. You may also press the Play button to view the day's recording for the selected channel.
3. You may also select additional channels for playback from the channel list on the right hand side of the Playback interface.

• Using the Front Panel/Remote:

1. Press the PLAY button. This will take you into the Playback interface.
2. Enter the channel you would like to watch recordings for on the front panel or remote (i.e. press '11' for channel 11).
3. Recordings will begin for the selected channel.

Playback from System Log

You may also playback recordings from the System Log.

To playback video from the System Log:

1. Enter the Log Search menu by clicking Menu > Maintenance > Log Search.
2. Set **Major Type** setting to *Information*.
3. Set **Minor Type** setting to *Start Record* or *End Record*.
4. Set **Start Time** and **End Time**.
5. Click the Search button.
6. A list of results with your search criteria will be displayed. Select the video log to playback and click Play.
7. The recording will begin to play in the Playback interface.

Backup

Recorded files can be backed up to various devices, such as

USB flash drives,

USB HDDs or a

DVD writer.

To export recorded

files:

1. Enter the Export

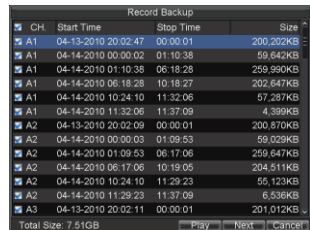
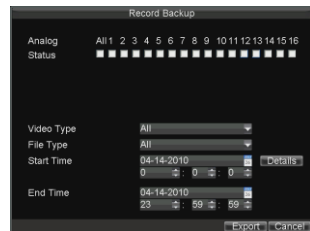
Video menu by

clicking Menu >

Video Export.

2. Select desired parameters to search for files to export.

3. Press the Export



button. This will take you to the Video Search menu.

4. Select the files to export. You may also click the Play button to verify that these files are indeed the ones you would like to export.

5. The size of the currently selected files is displayed in the lower-left corner of the window. Select the Next button to enter the Export menu.

6. Select device to export to from drop-down list (USB Flash Drive, USB HDD, and DVD Writer). If backup device is not recognized:

- Click the Refresh button.
- Reconnect device.
- Check for compatibility from vendor.



7. Click Start to begin backup process.

8. After the backup process has completed, you may select the files from your device and click the Play button to verify that it has been exported successfully.

Note: Video Player software will automatically be copied on to the device that the recorded files were exported on.

Using the Front Panel Controls

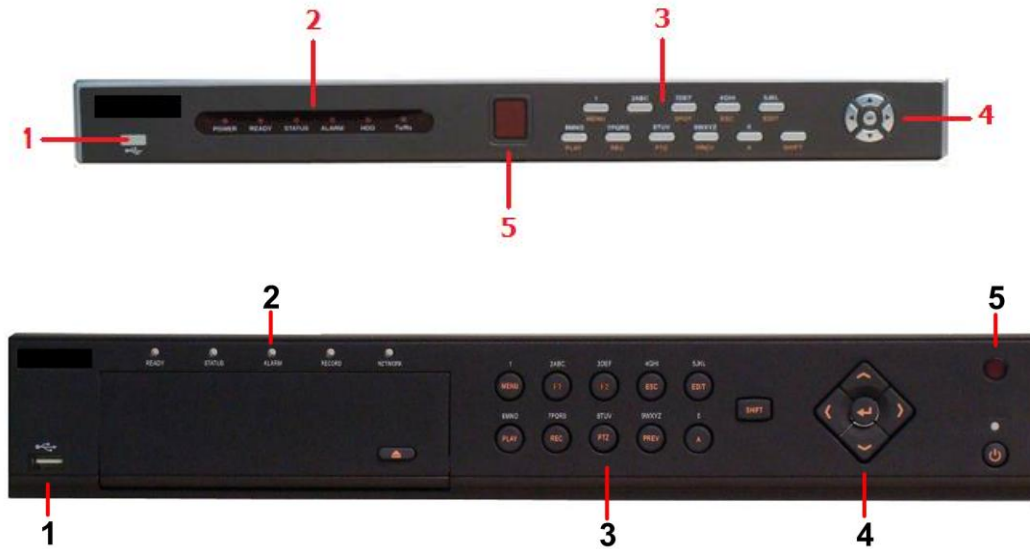


Figure 1. DVR Front Panel Controls

The controls on the front panel include:

1. **USB Ports:** Universal Serial Bus (USB) ports for additional devices such as USB mouse and USB Hard Disk Drive (HDD).
2. **Status Indicators:** Status indicators for different features of the DVR.
 - **Alarm:** Alarm indicator turns red when a sensor alarm is detected.
 - **Ready:** Ready indicator turns green when DVR is functioning properly.
 - **Status:** Status indicator turns green when DVR is controlled by an IR remote.
 - **HDD:** HDD indicator blinks red when data is being read from or written to HDD.
 - **NETWORK:** NETWORK indicator blinks blue when network connection is functioning properly.
3. **Control Buttons:**
 - **1/MENU Button:** The 1/MENU button works as numeric [1]. Pressing this button will return the user to the Main menu (after successful login). The 1/MENU button will also bring up Sensitivity Interface settings.
 - **2ABC/F1:** The 2ABC/F1 button works as numeric [2] and letter [ABC]. When it is used in a list field will select all items on the list.
 - **3DEF/F2:** The 3DEF/F2 button works as numeric [3] and letter [DEF]. It is also used to cycle through tab pages.

-
- **4GHI/ESC:** The 4GHI/ESC button works as numeric [4] and letter [GHI], it is also used to escape to the previous menu
 - **5JKL/EDIT:** The 5JKL/EDIT button works as numeric [5] and letter [JKL]. The 5JKL/EDIT button is used to edit text fields. When editing text fields, it will also function as a Backspace button to delete the character in front of the cursor. On checkbox fields, pressing the 5JKL/EDIT button will *tick* the checkbox. In Playback mode, it can be used to generate video clips for backup.
 - **6MNO/PLAY:** The 6MNO/PLAY button works as numeric [6] and letter [MNO]. It is used to enter the Playback menu. It is also used to turn audio on/off in the Playback menu.
 - **7PQRS/REC:** The 7PQRS/REC button works as numeric [7] and letter [PQRS]. It is also used to enter the Manual Record interface.
 - **8TUV/PTZ:** The 8TUV/PTZ button works as numeric [8] and letter [TUV]. It is also used to enter the PTZ Control mode.
 - **9WXYZ/PREVIEW:** The 9WXYZ/PREVIEW button works as numeric [9] and letter [WXYZ]. It is also used to switch between single screen and multi-screen mode.
 - **0/A:** The 0/A button works as numeric [0]. It is also used to switch between input methods (upper and lowercase alphabet, symbols and numeric input). It can also be used to clear entire masked areas, such as in the Motion Detection and Privacy Mask menus.
 - **SHIFT:** The SHIFT button is used for switch button action between numeric button and control button.
- 4. DIRECTION/ENTER Buttons:**
- **DIRECTION Buttons:** The DIRECTION buttons are used to navigate between different fields and items in menus. In Playback mode, the Up and Down button is used to speed up and slow down recorded video. The Left and Right button will jump 30s backward and forward in a video. In Preview mode, these buttons can be used to cycle through channels.
 - **ENTER Button:** The ENTER button is used to confirm selection in any of the menu modes. It can also be used to *tick* checkbox fields. In Playback mode, it can be used to play or pause the video. In Single Play mode, pressing the ENTER button will advance the video by a single frame.
- 5. IR Receiver:** Receiver for IR remote.

Note: It is important to note that you must click the EDIT button on either the remote or front panel on a text field before you're able to edit its content. After you're done entering text, you must hit the ENTER button to be able to move on to the next field.